

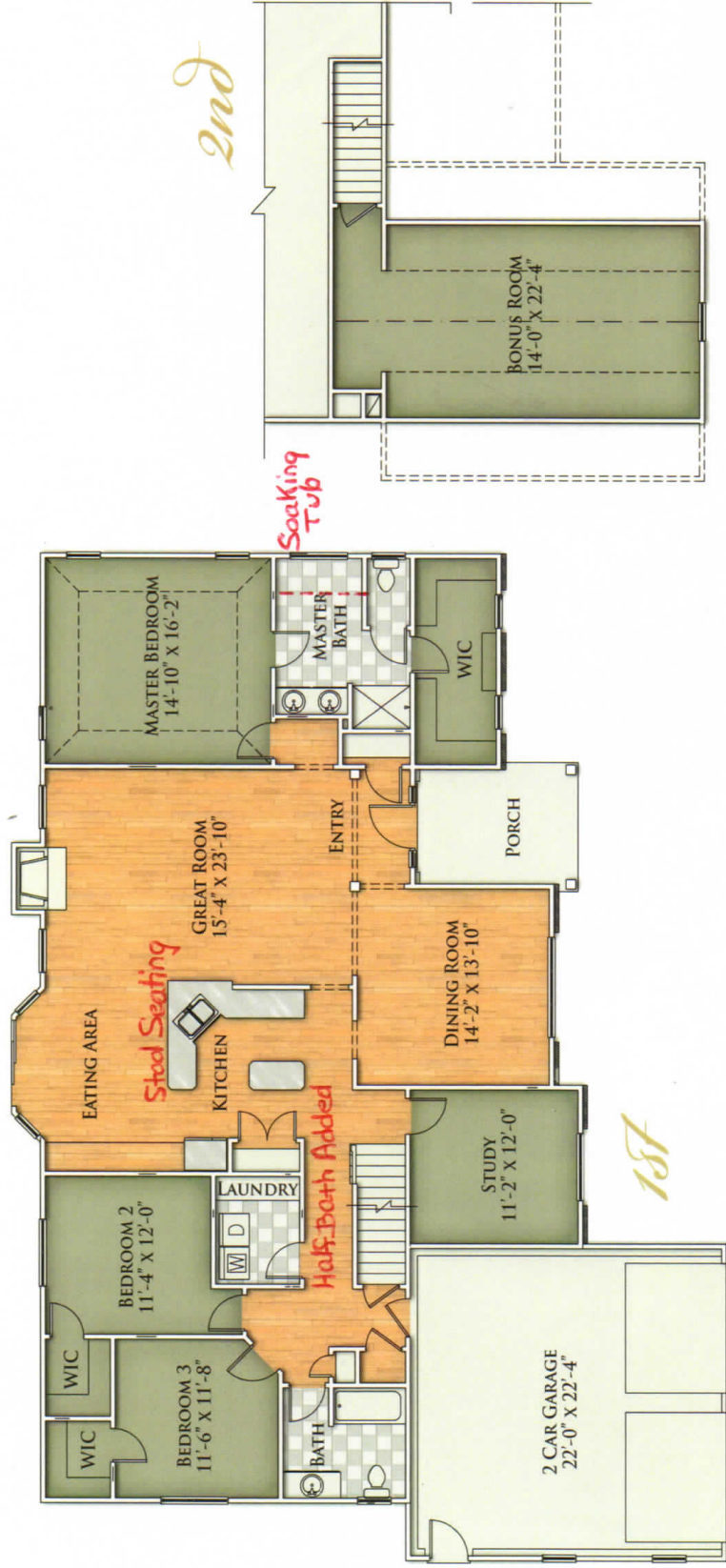
The Barlow

2075 Sq.Ft. | 3 Bedrooms | 2 Baths | 2 Car Garage
1 Half



The Barton

2075 Sq.Ft. | 3 Bedrooms | 2 Baths | 2 Car Garage
 | Half



Visit Sableswood.com or call 888-575-7364 to schedule your personal preview.

Floor Plans may vary according to elevation and figures reflecting size, square footage, and other dimensions are estimates; actual construction may vary. Room dimensions shown are standard "architect's" dimensions and may include the thickness of the outside and inside walls. Therefore, actual room dimensions will be smaller than shown. Size and square footage of your home may vary based on expandable area and options selected. We work to continuously improve our homes; therefore E.A. McNulty Real Estate reserve the right to change plans, dimensions, features, specifications, materials, and availability of homes without notice or obligations.

Marketed by:
STREAMLINE
 COMMUNITIES

E.A. MCNULTY REAL ESTATE

